



شركة الاستثمار الوطنية
NATIONAL INVESTMENTS COMPANY

Bursa Kuwait – Daily Market Report MENA Securities – Research & Studies Dep.

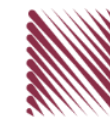
02nd November 2022



www.nic.com.kw

DAILY MARKET COVERAGE REPORT

NIC MENA SECURITIES - RESEARCH AND STUDIES DEP



Kuwait Market Watch

Tuesday, November 1, 2022

Index	Close	DTD Chg Net	DTD (%)	YTD (%)	52W High	52W Low	MKT CAP Bn (KD)	PBV (X)	PE (X)	DY (%)
All Share Index	7,365.29	46.88	0.64%	4.57%	8,472.15	6,788.83	43.69	2.00	31.19	3.97
Premier Index	8,244.73	53.79	0.66%	7.93%	9,437.37	7,343.90	34.46	2.23	32.26	4.39
Main Index	5,521.18	31.54	0.57%	-6.20%	6,600.62	5,190.37	9.24	1.18	27.19	2.39
NIC 50 Index	9,229.84	50.16	0.55%	8.30%	10,553.82	8,195.69	33.76	2.23	32.26	4.39

Index	Value Mn(KD)	Volume (Mn share)
All Share Index	57.80	175.44
Premier Index	49.36	98.80
Main Index	8.44	76.64
NIC 50 Index	56.18	149.02

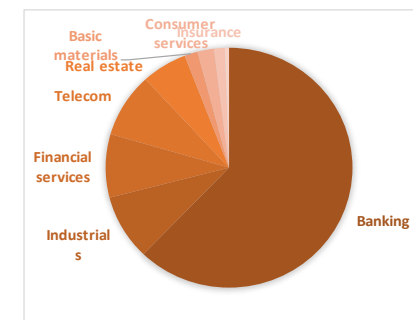
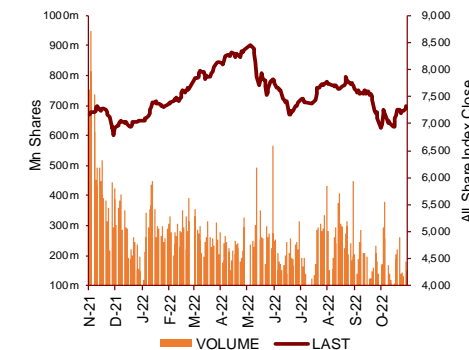
Market Breadth	UP	Down	No Chg
All Share Index	63	47	43
Premier Index	17	6	2
Main Index	46	41	41
NIC 50 Index	27	15	8

Today's Top 5 Gainer %	Close KD	Value KD	DTD (%)
Metal and Recycling	0.099	818	9.65%
Tamdeen Investment	0.591	6,327	7.45%
Ahli United Bank	0.284	886,071	6.37%
United Projects for Aviation S	0.214	2	4.90%
Al Argan International Real Es	0.091	4,739	4.00%

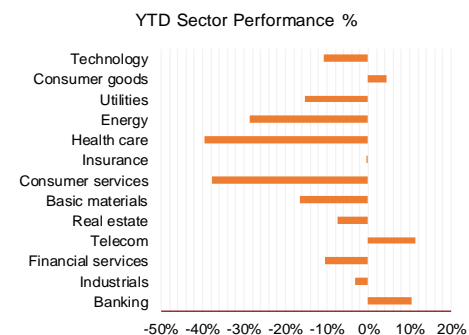
Today's Top 5 Loser %	Close KD	Value KD	DTD (%)
Kuwait Remal Real Estate	0.007	24,177	-12.50%
Kuwait and Middle East Fin:	0.119	2,705	-10.53%
Salbookh Trading	0.017	4,151	-9.19%
Warba Capital Holding	0.079	17,170	-7.03%
Advanced Technology	0.470	3	-5.81%

Today's Top 5 by Value	Close KD	Trade Val Mn(KD)	DTD (%)
Kuwait Finance House	0.810	22.01	0.00%
National Bank of Kuwait	1.099	9.09	1.95%
Mobile Telecommunications	0.604	2.35	0.83%
Kuwait Real Estate	0.107	2.09	-2.73%
National Industries Group Hold	0.235	1.65	0.43%

Top 5 by Volume	Close KD	Trade Vol Mn(Shrs)	DTD (%)
Kuwait Finance House	0.810	27.12	0.00%
Kuwait Real Estate	0.107	19.31	-2.73%
Aayan Leasing and Investm	0.128	10.61	0.00%
Asiya Capital Investments	0.044	9.57	-1.57%
Alafco Aviation Lease and F	0.166	9.52	-1.19%



Sector	Close	DTD Chg Net	DTD (%)	YTD (%)	52W High	52W Low	MKT CAP Bn (KD)	PBV (X)	PE (X)	DY (%)
Banking	1,805.66	13.760	0.77%	10.4%	1,992.2	1,557.8	26.815	1.65	24.99	1.85
Industrials	1,109.94	4.630	0.42%	-3.2%	1,443.6	976.3	3.790	1.01	19.96	3.92
Financial services	1,280.44	4.720	0.37%	-10.4%	1,678.3	1,190.4	3.684	1.00	30.54	2.90
Telecom	1,220.35	8.370	0.69%	11.3%	1,514.7	1,055.9	3.734	1.38	13.74	2.80
Real estate	1,233.32	4.010	0.33%	-7.3%	1,438.0	1,155.8	2.576	0.68	35.23	1.32
Basic materials	855.37	-1.020	-0.12%	-16.4%	1,233.3	800.8	0.746	1.22	9.00	6.23
Consumer services	456.73	1.720	0.38%	-37.8%	776.8	447.8	0.933	2.28	28.20	1.74
Insurance	1,526.83	1.320	0.09%	-0.5%	1,675.7	1,434.5	0.608	0.82	44.21	5.29
Health care	473.19	-8.780	-1.82%	-39.5%	821.7	420.4	0.235	15.77	12.72	1.00
Energy	1,040.42	19.690	1.93%	-28.5%	1,592.9	975.7	0.211	0.81	20.79	2.40
Utilities	502.63	-5.260	-1.04%	-15.4%	650.0	494.7	0.210	2.15	14.62	9.33
Consumer goods	1,409.65	12.930	0.93%	4.5%	1,641.0	1,208.7	0.138	0.91	37.19	2.17
Technology	618.37	8.730	1.43%	-10.9%	843.9	539.1	0.009	0.75	NM	-
	7,365.29	46.88	0.64%	4.6%	8,472.2	6,788.8	43.69	2.00	31.19	3.97



DAILY MARKET COVERAGE REPORT

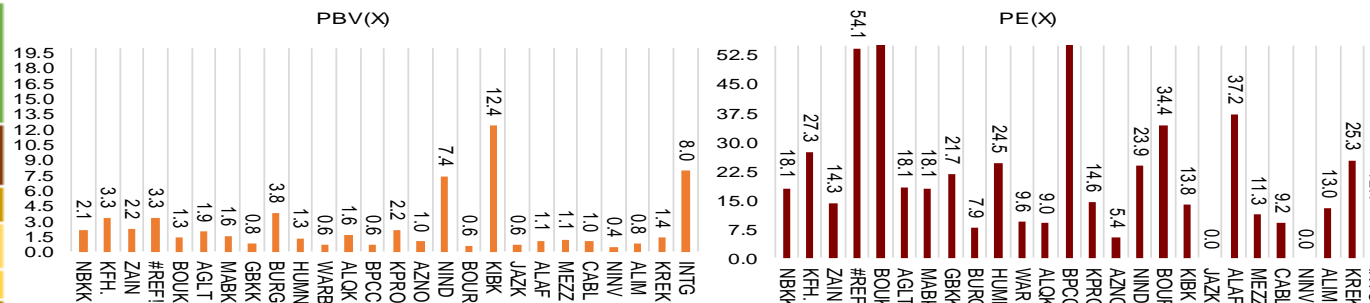
NIC MENA SECURITIES - RESEARCH AND STUDIES DEP



Premier Market

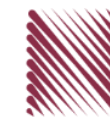
Tuesday, November 1, 2022

Premier Market	Price			Valuation Multiples			MKT Cap	Price Performance		Trading Indicators		ROE	ROA	52 Week (KD)		MKT Cap
	Close (KD)	Day Δ	Day % Δ	PBV(X)	PE(X)	DY%	Mn KD	MTD(%)	YTD (%)	Value (Mn KD)	(Mn Shrs)	(%)	(%)	High	Low	%
National Bank of Kuwait	1.099	0.021	1.95%	2.11	18.11	2.25	8,300	2%	16%	9.09	8.30	11.7%	1.5%	1.104	0.903	24.09%
Kuwait Finance House	0.810	0.000	0.00%	3.34	27.33	1.35	10,718	0%	7%	22.01	27.12	12.4%	1.6%	1.039	0.720	31.10%
Mobile Telecommunications	0.604	0.005	0.83%	2.20	14.28	5.51	2,614	1%	2%	2.35	3.91	15.6%	4.3%	0.698	0.564	7.58%
Boubyan Bank	0.831	0.007	0.85%	3.29	54.07	0.55	3,106	1%	17%	1.10	1.32	6.8%	0.8%	0.965	0.681	9.02%
Agility Public Warehousing	0.783	-0.001	-0.13%	1.34	60.14	2.13	1,978	0%	-1%	1.50	1.91	2.7%	2.2%	1.062	0.634	5.74%
Mabane Co.	0.877	0.005	0.57%	1.94	18.15	1.51	1,089	1%	17%	0.39	0.45	11.1%	5.5%	0.910	0.717	3.16%
Gulf Bank	0.345	0.002	0.58%	1.57	18.11	1.94	1,104	1%	30%	0.95	2.77	8.9%	0.9%	0.385	0.230	3.20%
Burgan Bank	0.218	0.000	0.00%	0.79	21.67	2.18	716	0%	-9%	0.14	0.62	3.8%	0.7%	0.307	0.205	2.08%
Human Soft Holding	3.399	0.037	1.10%	3.76	7.85	11.90	414	1%	5%	0.83	0.24	48.7%	39.9%	3.704	3.006	1.20%
Warba Bank	0.243	0.002	0.83%	1.33	24.52	0.00	486	1%	-11%	0.73	3.03	5.8%	0.6%	0.298	0.216	1.41%
Qurain Petrochemical Industries	0.250	-0.002	-0.79%	0.62	9.56	7.14	268	-1%	-28%	0.14	0.54	6.4%	5.2%	0.403	0.210	0.78%
Boubyan Petrochemical	0.799	0.002	0.25%	1.63	9.04	7.53	417	0%	-6%	0.44	0.56	19.1%	10.1%	1.125	0.769	1.21%
Kuwait Projects Company Holding	0.119	0.001	0.85%	0.63	305.13	4.24	291	1%	-16%	0.16	1.35	0.2%	0.1%	0.215	0.112	0.84%
Shamal Az-Zour Al-Oula Power & Water	0.191	-0.002	-1.04%	2.15	14.62	9.33	210	-1%	-16%	0.06	0.33	19.1%	2.9%	0.247	0.188	0.61%
National Industries Group Holding	0.235	0.001	0.43%	0.99	5.41	4.75	507	0%	-2%	1.65	7.01	15.2%	6.5%	0.314	0.207	1.47%
Boursa Kuwait Securities Co	2.300	0.028	1.23%	7.37	23.93	2.86	462	1%	14%	0.65	0.28	32.4%	22.9%	2.870	1.800	1.34%
Kuwait International Bank	0.191	0.002	1.06%	0.61	34.41	2.04	203	1%	-9%	0.58	3.02	1.7%	0.3%	0.259	0.186	0.59%
Jazeera Airways	1.712	0.041	2.45%	12.38	13.84	2.75	377	2%	33%	0.58	0.34	164.8%	12.1%	2.099	0.981	1.09%
Alafco Aviation Lease and Finance	0.166	-0.002	-1.19%	0.62	NM	0.00	158	-1%	-24%	1.60	9.52	-15.9%	-3.4%	0.256	0.163	0.46%
Mezzan Holding	0.363	0.001	0.28%	1.06	37.19	4.33	113	0%	-37%	0.42	1.17	2.8%	1.3%	0.613	0.358	0.33%
Gulf Cable and Electrical Industries	1.214	0.009	0.75%	1.12	11.26	4.98	253	1%	39%	0.16	0.13	11.0%	NM	1.850	0.860	0.73%
National Investments	0.247	0.008	3.35%	0.98	9.23	18.83	197	3%	13%	0.37	1.50	10.9%	8.9%	0.475	0.201	0.57%
Alimtiq Investment Group	0.074	0.000	-0.27%	0.44	NM	12.06	76	0%	0%	0.02	0.25	-0.9%	-0.4%	0.138	0.069	0.22%
Kuwait Real Estate	0.107	-0.003	-2.73%	0.78	13.03	2.65	99	-3%	-38%	2.09	19.31	6.0%	2.5%	0.187	0.097	0.29%
Integrated Holding	0.331	0.005	1.53%	1.37	25.31	3.07	84	2%	-11%	1.18	3.59	5.4%	3.4%	0.478	0.321	0.24%
ALI ALGanim	0.792	-0.003	-0.38%	7.96	12.42	0.00	220	0%	nm	0.17	0.22	27.8%	10.9%	0.966	0.750	0.64%
Total		53.79	0.66%	2.23	32.26	4.39	34,457	0.6%	7.9%	49.36	98.58					100%



DAILY MARKET COVERAGE REPORT

NIC MENA SECURITIES - RESEARCH AND STUDIES DEP



Premier Market Company	Price			Valuation Multiples			MKT Cap Mn KD	Price Performance		ROE (%)	ROA (%)
	Close (KD)	Day Δ	Day % Δ	PBV(X)	PE (X)	DY%		MTD (%)	YTD (%)		
National Bank of Kuwait	1.099	0.021	1.95%	2.11	18.1	2.25	8,300	1.9%	15.7%	11.7%	1.5%
Kuwait Finance House	0.810	0.000	0.00%	3.34	27.3	1.35	10,718	0.0%	7.1%	12.4%	1.6%
Mobile Telecommunications	0.604	0.005	0.83%	2.20	14.3	5.51	2,614	0.8%	1.5%	15.6%	4.3%
Boubyan Bank	0.831	0.007	0.85%	3.29	54.1	0.55	3,106	0.8%	16.7%	6.8%	0.8%
Agility Public Warehousing	0.783	-0.001	-0.13%	1.34	60.1	2.13	1,978	0.0%	-0.6%	2.7%	2.2%
Mabane Co.	0.877	0.005	0.57%	1.94	18.1	1.51	1,089	0.6%	17.2%	11.1%	5.5%
Gulf Bank	0.345	0.002	0.58%	1.57	18.1	1.94	1,104	0.6%	29.8%	8.9%	0.9%
Burgan Bank	0.218	0.000	0.00%	0.79	21.7	2.18	716	0.0%	-8.8%	3.8%	0.7%
Human Soft Holding	3.399	0.037	1.10%	3.76	7.9	11.90	414	1.1%	5.4%	48.7%	39.9%
Warba Bank	0.243	0.002	0.83%	1.33	24.5	0.00	486	0.8%	-11.3%	5.8%	0.6%
Qurain Petrochemical Industries	0.250	-0.002	-0.79%	0.62	9.6	7.14	268	-0.8%	-28.0%	6.4%	5.2%
Boubyan Petrochemical	0.799	0.002	0.25%	1.63	9.0	7.53	417	0.3%	-6.2%	19.1%	10.1%
Kuwait Projects Company Holding	0.119	0.001	0.85%	0.63	305.1	4.24	291	0.8%	-16.2%	0.2%	0.1%
Shamal Az-Zour Al-Oula Power & Water	0.191	-0.002	-1.04%	2.15	14.6	9.33	210	-1.0%	-16.2%	19.1%	2.9%
National Industries Group Holding	0.235	0.001	0.43%	0.99	5.4	4.75	507	0.4%	-2.5%	15.2%	6.5%
Boursa Kuwait Securities Co	2.300	0.028	1.23%	7.37	23.9	2.86	462	1.2%	13.9%	32.4%	22.9%
Kuwait International Bank	0.191	0.002	1.06%	0.61	34.4	2.04	203	1.1%	-8.9%	1.7%	0.3%
Jazeera Airways	1.712	0.041	2.45%	12.38	13.8	2.75	377	2.5%	32.7%	164.8%	12.1%
Alafco Aviation Lease and Finance	0.166	-0.002	-1.19%	0.62	NM	0.00	158	-1.2%	-23.9%	-15.9%	-3.4%
Mezzan Holding	0.363	0.001	0.28%	1.06	37.2	4.33	113	0.3%	-37.1%	2.8%	1.3%
Gulf Cable and Electrical Industries	1.214	0.009	0.75%	1.12	11.3	4.98	253	0.7%	39.4%	11.0%	9.0%
National Investments	0.247	0.008	3.35%	0.98	9.2	18.83	197	3.3%	12.8%	10.9%	8.9%
Alimtiq Investment Group	0.074	0.000	-0.27%	0.44	NM	12.06	76	-0.3%	-36.9%	-0.9%	-0.4%
Kuwait Real Estate	0.107	-0.003	-2.73%	0.78	13.0	2.65	99	-2.7%	-38.4%	6.0%	2.5%
Integrated Holding	0.331	0.005	1.53%	1.37	25.3	3.07	84	1.5%	-10.5%	5.4%	3.4%
ALI ALGanim	0.792	-0.003	-0.38%	3.66	12.4	0.00	220	-0.4%	nm	27.8%	10.9%
Total		53.79	0.66%	2.23	32.26	4.39	34,237	0.6%	7.9%		

Discription	Close (KD)	Day Δ	Day % Δ	50 Day	200 Day	14 Day	Mn KD	MTD (%)	YTD (%)	High	Low
Premier Index	8,245	53.79	0.66%	8,257	8,447	69	34,237	0.6%	7.9%	9,437	7,344

Top 5 Performrs (Today's Price Change)

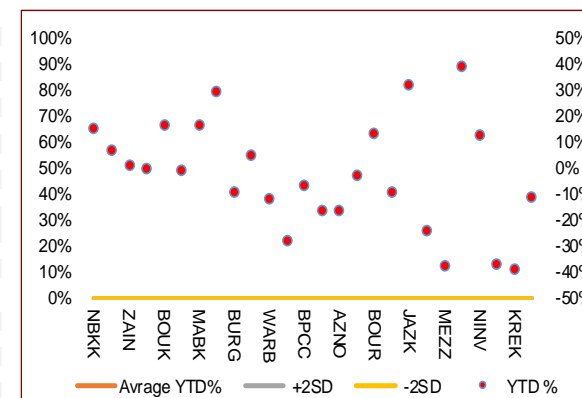
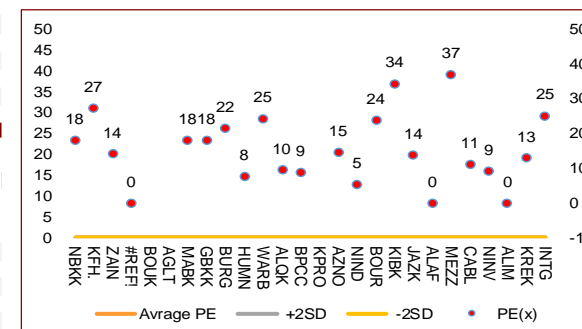
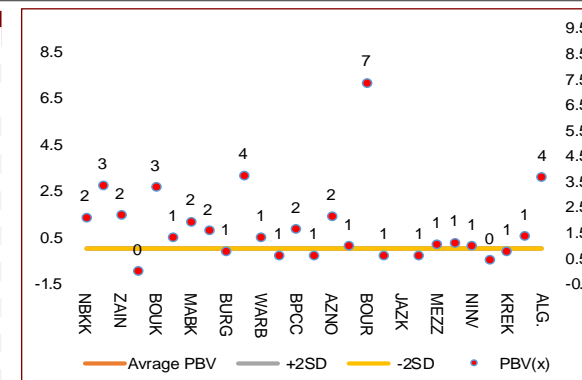
National Investments	0.247	0.008	3.35%	0.258	0.314	79	197	3.3%	12.8%	0.475	0.201
National Bank of Kuwait	1.099	0.021	1.95%	1.035	1.037	85	8,300	1.9%	15.7%	1.104	0.903
Integrated Holding	0.331	0.005	1.53%	0.375	0.399	30	84	1.5%	-10.5%	0.478	0.321
Boursa Kuwait Securities Co	2.300	0.028	1.23%	2.247	2.371	71	462	1.2%	13.9%	2.870	1.800
Human Soft Holding	3.399	0.037	1.10%	3.344	3.317	64	414	1.1%	5.4%	3.704	3.006

Middel Performrs (Today's Price Change)

Kuwait International Bank	0.191	0.002	1.06%	0.203	0.219	35	203	1.1%	-8.9%	0.259	0.186
Boubyan Bank	0.831	0.007	0.85%	0.813	0.808	67	3,106	0.8%	16.7%	0.965	0.681
Kuwait Projects Company Holding	0.119	0.001	0.85%	0.138	0.162	54	291	0.8%	-16.2%	0.215	0.112
Mobile Telecommunications	0.604	0.005	0.83%	0.593	0.611	69	2,614	0.8%	1.5%	0.698	0.564
Warba Bank	0.243	0.002	0.83%	0.238	0.260	92	486	0.8%	-11.3%	0.298	0.216
Gulf Cable and Electrical Industries	1.214	0.009	0.75%	1.250	1.331	72	253	0.7%	39.4%	1.850	0.860
Gulf Bank	0.345	0.002	0.58%	0.332	0.321	89	1,104	0.6%	29.8%	0.385	0.230
Mabane Co.	0.877	0.005	0.57%	0.855	0.816	62	1,089	0.6%	17.2%	0.910	0.717
National Industries Group Holding	0.235	0.001	0.43%	0.248	0.259	70	507	0.4%	-2.5%	0.314	0.207
Mezzan Holding	0.363	0.001	0.28%	0.100	0.100	44	113	0.3%	-37.1%	1.210	0.996
Boubyan Petrochemical	0.799	0.002	0.25%	0.855	0.936	49	417	0.3%	-6.2%	1.125	0.769
Ahli United Bank BSC	#N/A	#N/A	#N/A	0.305	0.287	50	#N/A	#N/A	#N/A	0.336	0.240
Burgan Bank	0.218	0.000	0.00%	0.230	0.253	54	716	0.0%	-8.8%	0.307	0.205
Agility Public Warehousing	0.783	-0.001	-0.13%	0.761	0.855	83	1,978	0.0%	-0.6%	1.062	0.634

Bottom 5 Performrs (Today's Price Change)

Alimtiq Investment Group	0.074	0.000	-0.27%	0.083	0.107	51	76	-0.3%	-36.9%	0.138	0.069
Qurain Petrochemical Industries	0.250	-0.002	-0.79%	0.283	0.341	50	268	-0.8%	-28.0%	0.403	0.210
Shamal Az-Zour Al-Oula Power & Water	0.191	-0.002	-1.04%	0.197	0.211	50	210	-1.0%	-16.2%	0.247	0.188
Alafco Aviation Lease and Finance	0.166	-0.002	-1.19%	0.182	0.203	42	158	-1.2%	-23.9%	0.256	0.163
Kuwait Real Estate	0.107	-0.003	-2.73%	0.113	0.145	63	99	-2.7%	-38.4%	0.187	0.097



DAILY MARKET COVERAGE REPORT

NIC MENA SECURITIES - RESEARCH AND STUDIES DEP



Banking Sector		Price			Valuation Multiples			MKT Cap	Price Performance		Trading Indicators		ROE	ROA	52 Week (KD)		MKT Cap
Company	Close (KD)	Day Δ	Day % Δ	PBV(X)	PE(X)	DY%	Mn KD	MTD(%)	YTD (%)	Value (Mn KD)	(Mn Shrs)	(%)	(%)	High	Low	%	
National Bank of Kuwait	1.099	0.021	1.95%	2.11	18.11	2.25	8,300	1.9%	15.7%	9.09	8.30	11.7%	1.5%	1.104	0.903	19.00%	
Kuwait Finance House	0.810	0.000	0.00%	3.34	27.33	1.35	10,718	0.0%	7.1%	22.01	27.12	12.4%	1.6%	1.039	0.720	24.53%	
Boubyan Bank	0.831	0.007	0.85%	3.29	54.07	0.55	3,106	0.8%	16.7%	1.10	1.32	6.8%	0.8%	0.965	0.681	7.11%	
Commercial Bank of Kuwait	0.486	0.000	0.00%	1.15	12.11	4.12	963	0.0%	-3.0%	0.00	0.00	9.9%	1.9%	0.549	0.456	2.20%	
Gulf Bank	0.345	0.002	0.58%	1.57	18.11	1.94	1,104	0.6%	29.8%	0.95	2.77	8.9%	0.9%	0.385	0.230	2.53%	
Burgan Bank	0.218	0.000	0.00%	0.79	21.67	2.18	716	0.0%	-8.8%	0.14	0.62	3.8%	0.7%	0.307	0.205	1.64%	
Ahli United Bank	0.284	0.017	6.37%	0.96	25.04	1.78	640	0.0%	-3.5%	0.89	3.17	3.8%	0.8%	0.324	0.250	1.46%	
Warba Bank	0.243	0.002	0.83%	1.33	24.52	0.00	486	0.8%	-11.3%	0.73	3.03	5.8%	0.6%	0.298	0.216	1.11%	
Al Ahli Bank of Kuwait	0.328	-0.003	-0.91%	0.97	21.55	1.44	581	-0.9%	35.6%	0.71	2.17	4.5%	0.6%	0.355	0.216	1.33%	
Kuwait International Bank	0.191	0.002	1.06%	0.61	34.41	2.04	203	1.1%	-8.9%	0.58	3.02	1.7%	0.3%	0.259	0.186	0.46%	
Total Banking Sector - 10 Companies							26,815			36.19	51.52					61.37%	
Basic Materials		Price			Valuation Multiples			MKT Cap	Price Performance		Trading Indicators		ROE	ROA	52 Week (KD)		MKT Cap
Company	Close (KD)	Day Δ	Day % Δ	PBV(X)	PE(X)	DY%	Mn KD	MTD(%)	YTD (%)	Value (Mn KD)	(Mn Shrs)	(%)	(%)	High	Low	%	
Qurain Petrochemical Industries	0.250	-0.002	-0.79%	0.62	9.56	7.14	268	-0.79%	-27.95%	0.14	0.54	6.4%	5.2%	0.403	0.210	0.61%	
Boubyan Petrochemical	0.799	0.002	0.25%	1.63	9.04	7.53	417	0.25%	-6.22%	0.44	0.56	19.1%	10.1%	1.125	0.769	0.95%	
Al Kout Industrial Projects	0.390	0.000	0.00%	1.40	4.93	10.26	39	0.00%	-21.37%	0.00	0.00	30.5%	20.1%	0.545	0.390	0.09%	
Kuwait Foundry	0.293	0.003	1.03%	1.22	12.48	0.00	21	1.03%	-20.60%	0.00	0.00	10.7%	10.3%	0.424	0.260	0.05%	
Total Basic Materials - 4 Companies							746			0.58	1.10					1.71%	
Consumer Goods		Price			Valuation Multiples			MKT Cap	Price Performance		Trading Indicators		ROE	ROA	52 Week (KD)		MKT Cap
Company	Close (KD)	Day Δ	Day % Δ	PBV(X)	PE(X)	DY%	Mn KD	MTD(%)	YTD (%)	Value (Mn KD)	(Mn Shrs)	(%)	(%)	High	Low	%	
Mezzan Holding	0.363	0.001	0.28%	1.06	37.19	4.33	113	0.3%	-37.1%	0.42	1.17	2.8%	1.3%	0.613	0.358	0.26%	
Livestock Transport and Trading	0.121	0.001	0.83%	0.75	NM	0.00	25	0.8%	-33.5%	0.00	0.03	-14.5%	-8.2%	0.196	0.112	0.06%	
Total Consumer Goods - 2 Companies							138			0.43	1.20					0.32%	
Consumer Services		Price			Valuation Multiples			MKT Cap	Price Performance		Trading Indicators		ROE	ROA	52 Week (KD)		MKT Cap
Company	Close (KD)	Day Δ	Day % Δ	PBV(X)	PE(X)	DY%	Mn KD	MTD(%)	YTD (%)	Value (Mn KD)	(Mn Shrs)	(%)	(%)	High	Low	%	
Jazeera Airways	1.712	0.041	2.45%	12.38	13.84	2.75	377	2.5%	32.7%	0.58	0.34	164.8%	12.1%	2.099	0.981	0.86%	
Kuwait National Cinema	0.908	0.000	0.00%	1.11	8.84	3.30	84	0.0%	2.9%	0.00	0.00	13.3%	6.1%	0.933	0.850	0.19%	
Oula Fuel Marketing	0.145	0.000	0.00%	0.90	15.64	3.45	59	0.0%	-7.1%	0.00	0.00	5.6%	2.9%	0.178	0.140	0.13%	
Al Soor Fuel Marketing	0.150	0.001	0.67%	0.88	19.13	3.36	61	0.7%	-3.2%	0.02	0.13	4.8%	3.6%	0.175	0.142	0.14%	
Sultan Center Food Products	0.110	-0.001	-0.90%	0.63	0.88	0.00	31	-0.9%	-47.6%	0.00	0.02	74.2%	12.2%	0.269	0.103	0.07%	
Jiyad Holding	0.021	-0.001	-4.11%	0.24	NM	0.00	4	-4.1%	-74.0%	0.05	2.28	-16.2%	-10.9%	0.099	0.015	0.01%	
IFA Hotels and Resorts	0.028	0.001	2.96%	3.67	185.33	0.00	18	3.0%	-48.0%	0.04	1.54	2.0%	0.4%	0.073	0.025	0.04%	
Kuwait Resorts	0.075	-0.002	-2.22%	0.49	10.54	3.84	15	-2.2%	-22.5%	0.08	1.04	4.8%	4.2%	0.110	0.067	0.03%	
Future Kid Entertainment and Real Estate	0.115	-0.001	-0.86%	0.99	10.06	0.00	13	-0.9%	46.1%	0.01	0.11	10.4%	4.7%	0.130	0.074	0.03%	
Al Eid Food	0.241	0.002	0.84%	1.90	14.65	2.86	41	0.8%	4.4%	0.13	0.52	13.5%	10.1%	0.304	0.207	0.09%	
Kuwait Hotels	0.163	0.000	0.00%	2.04	18.87	3.07	9	0.0%	132.9%	0.00	0.00	11.1%	7.4%	0.201	0.070	0.02%	
Palms Agro Production	0.078	0.000	0.00%	0.79	NM	0.00	4	0.0%	14.4%	0.00	0.00	-13.8%	-10.9%	0.083	0.043	0.01%	
ALI ALGanim	0.792	-0.003	-0.38%	3.66	12.42	0.00	220	-0.4%	nm	0.17	0.22	27.8%	10.9%	0.966	0.750	0.50%	
Total Consumer Services - 13 Companies							933			1.08	6.20					2.14%	

DAILY MARKET COVERAGE REPORT

NIC MENA SECURITIES - RESEARCH AND STUDIES DEP



Financial Services	Price			Valuation Multiples			MKT Cap	Price Performance		Trading Indicators		ROE	ROA	52 Week (KD)		MKT Cap
Company	Close (KD)	Day Δ	Day % Δ	PBV(X)	PE(X)	DY%	Mn KD	MTD(%)	YTD (%)	Value (Mn KD)	(Mn Shrs)	(%)	(%)	High	Low	%
Egypt Kuwait Holding	0.383	0.000	0.00%	2.12	5.75	5.58	432	0.0%	-9.7%	0.00	0.00	37.1%	17.5%	0.465	0.353	0.99%
Kuwait Projects Company Holding	0.119	0.001	0.85%	0.63	305.13	4.24	291	0.8%	-16.2%	0.16	1.35	0.2%	0.1%	0.215	0.112	0.67%
National Industries Group Holding	0.235	0.001	0.43%	0.99	5.41	4.75	507	0.4%	-2.5%	1.65	7.01	15.2%	6.5%	0.314	0.207	1.16%
Boursa Kuwait Securities Co	2.300	0.028	1.23%	7.37	23.93	2.86	462	1.2%	13.9%	0.65	0.28	32.4%	22.9%	2.870	1.800	1.06%
GFH Financial Group	0.078	0.000	-0.39%	0.89	9.55	4.66	270	-0.4%	-21.1%	0.41	5.29	9.3%	1.2%	0.109	0.073	0.62%
National Investments	0.247	0.008	3.35%	0.98	9.23	18.83	197	3.3%	12.8%	0.37	1.50	10.9%	8.9%	0.475	0.201	0.45%
Tamdeen Investment	0.591	0.041	7.45%	0.68	15.28	1.82	201	7.5%	55.9%	0.01	0.01	4.9%	3.8%	0.591	0.309	0.46%
Alimtiq Investment Group	0.074	0.000	-0.27%	0.44	NM	12.06	76	-0.3%	-36.9%	0.02	0.25	-0.9%	-0.4%	0.138	0.069	0.17%
Commercial Facilities	0.176	0.000	0.00%	0.56	8.70	8.52	89	0.0%	-14.6%	0.01	0.03	6.5%	3.6%	0.228	0.165	0.20%
Aayan Leasing and Investment	0.128	0.000	0.00%	0.95	12.12	0.00	85	0.0%	-22.7%	1.35	10.61	8.2%	6.0%	0.204	0.104	0.19%
Kuwait Investment	0.131	-0.001	-0.76%	0.63	7.59	18.94	72	-0.8%	-53.4%	0.07	0.56	8.1%	4.6%	0.317	0.113	0.16%
Noor Financial Investment	0.179	-0.001	-0.56%	1.11	5.01	2.67	91	-0.6%	-29.6%	0.37	2.04	22.7%	16.0%	0.319	0.163	0.21%
Arzan Financial Group for Financing and Investment	0.129	-0.003	-2.27%	0.90	9.49	1.83	104	-2.3%	-17.1%	0.32	2.51	9.4%	7.0%	0.180	0.109	0.24%
Kuwait Financial Centre	0.107	0.000	0.00%	0.52	8.09	8.90	54	0.0%	-37.9%	0.01	0.11	6.9%	4.0%	0.197	0.101	0.12%
Gulf Investment House	0.380	-0.019	-4.76%	3.62	NM	0.00	154	-4.8%	26.7%	0.02	0.05	-3.0%	-2.0%	0.422	0.217	0.35%
Arabi Group Holdings	0.295	0.008	2.79%	1.76	NM	0.00	49	2.8%	1.4%	0.09	0.30	-29.0%	-4.0%	0.499	0.169	0.11%
Kuwait and Middle East Financial Investment	0.119	-0.014	-10.53%	1.03	13.85	5.26	26	-10.5%	-20.7%	0.00	0.02	7.5%	5.2%	0.175	0.094	0.06%
Privatization Holding	0.035	-0.002	-5.42%	0.29	NM	0.00	21	-5.4%	-36.3%	0.05	1.32	-7.1%	-5.5%	0.070	0.032	0.05%
Asiya Capital Investments	0.044	-0.001	-1.57%	0.40	2.42	0.00	34	-1.6%	-15.8%	0.44	9.57	17.9%	17.6%	0.071	0.037	0.08%
Umm Al Qaiwain General Investment Co	0.094	0.000	0.00%	0.57	4.97	5.32	34	0.0%	7.8%	0.00	0.00	12.0%	10.0%	0.108	0.077	0.08%
Securities House	0.060	0.000	0.68%	0.60	10.17	0.00	25	0.7%	-39.7%	0.01	0.12	5.8%	5.0%	0.114	0.052	0.06%
Kamco Investment	0.099	0.000	-0.20%	0.55	3.91	10.10	34	-0.2%	-23.4%	0.03	0.31	14.5%	6.9%	0.167	0.089	0.08%
First Investment	0.075	0.000	0.00%	0.65	106.86	0.00	33	0.0%	-11.2%	0.01	0.15	0.6%	0.7%	0.104	0.068	0.08%
Inovest BSC Public	0.076	-0.001	-1.29%	0.00	NM	0.00	23	-1.3%	-35.3%	0.01	0.19	2.7%	1.7%	0.189	0.070	0.05%
Coast Investment and Development	0.077	0.000	-0.26%	0.76	10.51	6.49	36	-0.3%	-26.9%	0.01	0.14	7.2%	6.8%	0.126	0.066	0.08%
Al Madar Investment	0.097	-0.001	-1.02%	0.92	56.73	0.00	20	-1.0%	-18.5%	0.00	0.00	1.6%	1.7%	0.125	0.083	0.05%
Bayan Investment	0.035	0.000	0.00%	0.31	NM	0.00	13	0.0%	-28.8%	0.00	0.00	-0.5%	-0.6%	0.060	0.031	0.03%
Al Manar Financing and Leasing	0.062	0.002	2.48%	0.61	20.20	0.00	16	2.5%	-0.5%	0.00	0.00	2.9%	2.3%	0.079	0.049	0.04%
Manazel Holding	0.027	0.000	-0.37%	0.59	9.32	0.00	12	-0.4%	-46.9%	0.01	0.29	6.2%	2.0%	0.060	0.025	0.03%
Kuwait Finance and Investment	0.063	0.000	0.00%	0.47	27.39	0.00	19	0.0%	-27.4%	0.00	0.00	1.7%	1.6%	0.104	0.055	0.04%
National International Holding	0.105	-0.005	-4.55%	0.61	7.84	4.41	23	-4.5%	-28.8%	0.00	0.02	7.6%	5.3%	0.167	0.091	0.05%
Osoul Investment	0.089	0.000	0.00%	0.81	NM	11.90	11	0.0%	8.9%	0.00	0.00	-4.4%	-4.0%	0.118	0.062	0.03%
UniCap Investment and Finance	0.055	-0.001	-0.90%	0.61	64.71	0.00	12	-0.9%	-19.7%	0.02	0.28	1.9%	0.2%	0.087	0.050	0.03%
Amar Finance and Leasing	0.063	0.000	0.00%	0.58	3.42	0.00	12	0.0%	-3.8%	0.00	0.00	18.6%	17.3%	0.082	0.058	0.03%
Gulf North Africa Holding	0.149	0.001	0.68%	1.72	59.40	0.00	20	-0.7%	73.1%	0.20	1.38	3.0%	2.4%	0.141	0.057	0.05%
International Financial Advisors	0.090	0.003	3.33%	0.58	36.10	0.00	22	3.3%	-20.4%	0.06	0.74	1.9%	0.7%	0.129	0.082	0.05%
Credit Rating and Collection	0.016	0.000	-1.25%	0.54	NM	0.00	3	-1.2%	-60.7%	0.00	0.01	-0.4%	-0.3%	0.069	0.014	0.01%
Ekttitab Holding	0.011	0.000	0.93%	0.35	NM	0.00	3	0.9%	-49.3%	0.02	1.58	-16.8%	-12.9%	0.024	0.009	0.01%
Kuwait Syrian Holding Co	0.034	0.000	-0.59%	0.33	5.45	0.00	6	-0.6%	-21.0%	0.00	0.01	8.7%	6.2%	0.060	0.026	0.01%
Warba Capital Holding	0.079	-0.006	-7.03%	0.88	NM	0.00	8	-7.0%	-7.8%	0.02	0.21	-0.8%	-0.7%	0.120	0.070	0.02%
National Consumer Holding	0.112	0.001	0.90%	5.07	NM	0.00	34	0.9%	-6.6%	0.34	3.01	-8.0%	-7.5%	0.163	0.097	0.08%
Al Deera Holding	0.161	-0.006	-3.59%	1.08	8.11	0.00	15	-3.6%	-19.5%	0.00	0.01	12.5%	6.5%	0.200	0.145	0.03%
AL Safat Investment	0.100	0.001	1.22%	1.27	NM	0.00	28	1.2%	-18.3%	0.46	4.64	-1.8%	-1.6%	0.270	0.091	0.06%
Gulf Franchising Holding	0.082	0.000	0.00%	1.61	NM	0.00	3	0.0%	-14.5%	0.00	0.00	-5.7%	-1.6%	0.148	0.063	0.01%
Total Financial Services - 44 Companies							3,681			7.19	55.89					8.43%

DAILY MARKET COVERAGE REPORT

NIC MENA SECURITIES - RESEARCH AND STUDIES DEP



Health Care	Price			Valuation Multiples			MKT Cap	Price Performance		Trading Indicators		ROE	ROA	52 Week (KD)		MKT Cap
	Company	Close (KD)	Day Δ	Day % Δ	PBV(X)	PE(X)		DY%	Mn KD	MTD(%)	YTD (%)			Value (Mn KD)	(Mn Shrs)	
Al-Maidan Clinic for Oral Health Services	0.695	0.000	0.00%	2.76	15.29	0.00	156	0.0%	-49.6%	0.00	0.00	19.4%	12.5%	1.400	0.556	0.36%
Advanced Technology	0.470	-0.029	-5.81%	1.05	10.15	3.01	71	-5.8%	-9.3%	0.00	0.00	10.7%	2.1%	0.595	0.450	0.16%
Yiaco Medical	0.450	0.000	0.00%	43.51	NM	0.00	8	0.0%	2.7%	0.00	0.00	-161.7%	-4.7%	0.480	0.399	0.02%
Total Health Care - 3 Companies							235			0.00	0.00					0.54%

Industrials	Price			Valuation Multiples			MKT Cap	Price Performance		Trading Indicators		ROE	ROA	52 Week (KD)		MKT Cap
	Company	Close (KD)	Day Δ	Day % Δ	PBV(X)	PE(X)		DY%	Mn KD	MTD(%)	YTD (%)			Value (Mn KD)	(Mn Shrs)	
Agility Public Warehousing	0.783	-0.001	-0.13%	1.34	60.14	2.13	1,978	0.0%	-0.6%	1.50	1.91	2.7%	2.2%	1.062	0.634	4.53%
Human Soft Holding	3.399	0.037	1.10%	3.76	7.85	11.90	414	1.1%	5.4%	0.83	0.24	48.7%	39.9%	3.704	3.006	0.95%
Alafco Aviation Lease and Finance	0.166	-0.002	-1.19%	0.62	NM	0.00	158	-1.2%	-23.9%	1.60	9.52	-15.9%	-3.4%	0.256	0.163	0.36%
Kuwait Cement	0.217	0.006	2.84%	0.79	NM	2.37	155	2.8%	-6.1%	0.03	0.15	-1.1%	-0.7%	0.295	0.194	0.35%
Gulf Cable and Electrical Industries	1.214	0.009	0.75%	1.12	11.26	4.98	253	0.7%	39.4%	0.16	0.13	11.0%	9.0%	1.850	0.860	0.58%
Integrated Holding	0.331	0.005	1.53%	1.37	25.31	3.07	84	1.5%	-10.5%	1.18	3.59	5.4%	3.4%	0.478	0.321	0.19%
Kuwait Portland Cement	0.853	0.018	2.16%	1.20	17.85	8.38	85	2.2%	-13.0%	0.02	0.02	6.8%	5.3%	1.240	0.751	0.20%
Educational Holding Group	2.450	0.000	0.00%	4.16	9.30	21.75	51	0.0%	-38.8%	0.00	0.00	30.0%	17.2%	4.987	2.330	0.12%
United Projects for Aviation Services	0.214	0.010	4.90%	0.78	76.43	0.00	81	4.9%	-13.7%	0.00	0.00	1.0%	0.6%	0.318	0.182	0.18%
Heavy Engineering Industries and Shipbuilding	0.633	0.008	1.28%	1.70	20.91	3.20	114	1.3%	24.4%	0.16	0.25	8.2%	3.2%	0.960	0.442	0.26%
National Industries	0.191	0.000	0.00%	0.77	11.14	5.24	67	0.0%	-1.0%	0.00	0.00	6.8%	5.1%	0.260	0.181	0.15%
ACICO Industries	0.091	0.000	0.11%	0.41	NM	0.00	30	0.1%	-34.7%	0.02	0.20	-1.9%	-0.5%	0.208	0.076	0.07%
Kuwait Company for Process Plant Construction a	0.305	-0.002	-0.65%	1.23	19.77	8.07	36	-0.7%	-35.7%	0.00	0.02	6.1%	3.5%	0.522	0.286	0.08%
Ras Al Khaimah for White Cement and Constructi	0.140	0.000	0.00%	1.18	26.25	5.92	70	0.0%	11.1%	0.00	0.00	4.6%	3.7%	0.175	0.113	0.16%
Combined Group Contracting	0.416	0.006	1.46%	1.55	6.38	6.10	71	1.5%	17.5%	0.15	0.35	26.3%	5.8%	0.500	0.308	0.16%
Kuwait and Gulf Link Transport	0.057	-0.001	-1.04%	0.34	3.07	0.00	16	-1.0%	-16.6%	0.01	0.18	11.6%	2.6%	0.106	0.054	0.04%
Shuaiba Industrial	0.150	0.001	0.67%	0.83	12.48	8.05	15	0.7%	-33.3%	0.00	0.01	6.6%	5.4%	0.310	0.137	0.03%
National Cleaning	0.037	0.000	-0.53%	0.30	NM	0.00	9	-0.5%	-34.4%	0.00	0.10	-13.9%	-4.1%	0.080	0.031	0.02%
Fujairah Cement Industries	0.039	0.000	0.26%	0.21	NM	0.00	14	0.3%	-28.7%	0.00	0.00	-12.7%	-6.3%	0.069	0.028	0.03%
Mubarrad Holding	0.080	0.000	0.00%	0.62	6.77	6.25	13	0.0%	-27.3%	0.00	0.00	9.3%	8.2%	0.130	0.071	0.03%
Specialities Group Holding	0.092	0.000	0.33%	0.49	10.02	7.40	15	0.3%	-25.8%	0.06	0.71	5.0%	3.6%	0.152	0.076	0.03%
Salbookh Trading	0.017	-0.002	-9.19%	0.51	NM	0.00	2	-9.2%	-61.3%	0.00	0.24	-51.7%	-28.6%	0.062	0.016	0.00%
Metal and Recycling	0.099	0.009	9.65%	1.28	NM	0.00	9	9.6%	4.1%	0.00	0.01	-12.0%	-2.0%	0.136	0.060	0.02%
Equipment Holding	0.032	0.000	0.00%	0.51	NM	0.00	3	0.0%	-41.3%	0.00	0.00	-11.1%	-3.2%	0.079	0.030	0.01%
Jassim Transport & Stevedoring	0.329	0.000	0.00%	1.11	14.35	4.86	49	0.0%	-19.2%	0.01	0.12	8.0%	6.3%	0.410	0.300	0.11%
Total Industrials - 24 Companies							3,790			5.75	17.76					8.67%

DAILY MARKET COVERAGE REPORT

NIC MENA SECURITIES - RESEARCH AND STUDIES DEP



Insurance	Price			Valuation Multiples			MKT Cap	Price Performance		Trading Indicators		ROE	ROA	52 Week (KD)		MKT Cap
	Company	Close (KD)	Day Δ	Day % Δ	PBV(X)	PE(X)		DY%	Mn KD	MTD(%)	YTD (%)			Value (Mn KD)	(Mn Shrs)	
Gulf Insurance Group	0.985	0.000	0.00%	1.14	4.22	10.76	279	0.0%	-7.9%	0.00	0.00	28.6%	5.5%	1.200	0.905	0.64%
Al Ahleia Insurance	0.509	0.000	0.00%	0.85	7.02	6.88	110	0.0%	0.8%	0.00	0.00	12.5%	4.4%	0.612	0.453	0.25%
Kuwait Insurance	0.495	0.001	0.20%	0.75	7.67	6.68	91	0.2%	27.9%	0.03	0.05	10.4%	6.1%	0.497	0.379	0.21%
Kuwait Reinsurance	0.286	0.000	0.00%	1.03	10.10	1.60	68	0.0%	13.4%	0.00	0.00	10.8%	3.4%	0.373	0.217	0.16%
Bahrain Kuwait Insurance	0.191	0.000	0.00%	1.33	11.98	8.44	29	0.0%	0.0%	0.00	0.00	11.0%	2.1%	0.191	0.191	0.07%
Warba Insurance and Reinsurance	0.128	0.002	1.59%	0.55	8.90	7.94	22	1.6%	-19.5%	0.00	0.00	6.2%	2.1%	0.165	0.119	0.05%
First Takaful Insurance	0.046	0.000	0.00%	0.60	284.38	0.00	5	0.0%	-9.0%	0.00	0.00	0.2%	0.1%	0.081	0.034	0.01%
Wethaq Takaful Insurance	0.037	0.000	0.00%	0.33	19.37	0.00	4	0.0%	-27.3%	0.00	0.00	1.7%	1.7%	0.102	0.024	0.01%
Total Insurance - 8 Companies							608			0.03	0.05					1.39%

Energy	Price			Valuation Multipels			MKT Cap	Price Performance		Trading Indicators		ROE	ROA	52 Week (KD)		MKT Cap
	Company	Close (KD)	Day Δ	Day % Δ	PBV(X)	PE(X)		DY%	Mn KD	MTD(%)	YTD (%)			Value (Mn KD)	(Mn Shrs)	
National Petroleum Services	0.722	0.025	3.59%	1.82	12.94	5.02	70	3.6%	-12.0%	0.00	0.00	14.5%	11.6%	0.880	0.625	0.16%
Independent Petroleum Group	0.440	0.010	2.33%	0.81	14.74	6.98	80	2.3%	-25.2%	0.00	0.00	5.5%	1.0%	0.614	0.368	0.18%
Burgan for Well Drilling Trading and Maintenance	0.115	0.000	0.00%	0.42	9.65	2.37	30	0.0%	-14.0%	0.01	0.09	4.4%	1.4%	0.161	0.094	0.07%
Energy House Holding	0.022	0.000	0.00%	0.79	NM	0.00	16	0.0%	-65.6%	0.00	0.00	-1.4%	-2.5%	0.086	0.019	0.04%
Gulf Petroleum Investment	0.016	0.000	-2.50%	0.22	NM	0.00	7	-2.5%	-36.3%	0.04	2.67	-4.0%	-2.6%	0.031	0.013	0.02%
Senergy Holding	0.039	0.000	-1.03%	0.77	45.83	0.00	8	-1.0%	-21.4%	0.00	0.04	1.7%	1.4%	0.063	0.036	0.02%
Total Energy - 6 Companies							211			0.05	2.80					0.48%

DAILY MARKET COVERAGE REPORT

NIC MENA SECURITIES - RESEARCH AND STUDIES DEP



Real Estate	Price		Valuation Multiples				MKT Cap	Performance		Trading Indicators		ROE	ROA	2 Week (KD)		MKT Cap
Company	Close (KD)	Day Δ	Day % Δ	PBV(X)	PE(X)	DY%	Mn KD	MTD(%)	YTD (%)	Value (Mn KD)	(Mn Shrs)	(%)	(%)	High	Low	%
Mabane Co.	0.877	0.005	0.57%	1.94	18.15	1.51	1,089	0.6%	17.2%	0.39	0.45	11.1%	5.5%	0.910	0.717	2.49%
Salhia Real Estate	0.466	0.000	0.00%	1.55	19.91	3.07	240	0.0%	-7.5%	0.39	0.83	7.9%	3.2%	0.578	0.428	0.55%
Commercial Real Estate	0.099	-0.001	-0.50%	0.60	10.17	5.03	174	-0.5%	-20.8%	0.51	5.17	6.2%	3.3%	0.140	0.094	0.40%
National Real Estate	0.140	0.000	0.00%	0.78	1.27	0.00	260	0.0%	-24.0%	0.18	1.25	64.5%	38.6%	0.212	0.125	0.60%
Tamdeen Real Estate	0.380	0.010	2.70%	0.74	8.75	2.70	153	2.7%	12.1%	0.04	0.10	9.2%	3.9%	0.380	0.296	0.35%
Kuwait Real Estate	0.107	-0.003	-2.73%	0.78	13.03	2.65	99	-2.7%	-38.4%	2.09	19.31	6.0%	2.5%	0.187	0.097	0.23%
United Real Estate	0.073	0.001	1.96%	0.46	227.81	0.00	78	2.0%	-3.3%	0.00	0.05	0.2%	-0.1%	0.121	0.064	0.18%
First Dubai for Real Estate Development	0.050	0.000	0.20%	0.48	33.56	0.00	37	0.2%	-52.4%	0.02	0.40	1.5%	1.2%	0.120	0.044	0.08%
Al Mazaya Holding	0.050	0.000	0.00%	0.50	45.00	0.00	31	0.0%	-35.3%	0.07	1.37	1.1%	0.6%	0.089	0.043	0.07%
Ajial Real Estate Entertainment	0.274	0.001	0.37%	0.40	16.90	1.83	53	0.4%	-9.9%	0.00	0.00	2.4%	2.0%	0.345	0.268	0.12%
Injazzat Real Estate Development	0.079	0.002	2.07%	0.47	6.30	6.47	27	2.1%	-21.1%	0.00	0.06	7.5%	3.9%	0.114	0.070	0.06%
Munshaat Real Estate Projects	0.060	0.000	0.00%	1.80	4.97	0.00	19	0.0%	-16.1%	0.00	0.00	42.9%	4.5%	0.076	0.052	0.04%
Aayan Real Estate	0.066	-0.001	-2.09%	0.46	63.08	0.00	27	-2.1%	-25.9%	0.01	0.12	0.7%	1.4%	0.105	0.056	0.06%
Al Argan International Real Estate	0.091	0.004	4.00%	0.30	33.33	0.00	23	4.0%	-22.2%	0.00	0.05	0.9%	0.3%	0.144	0.073	0.05%
Al-Enmaa Real Estate	0.059	0.000	-0.51%	0.65	NM	0.00	27	-0.5%	-20.9%	0.00	0.06	-5.9%	NM	0.091	0.050	0.06%
Arkan Al Kuwait Real Estate	0.124	0.000	0.00%	0.87	12.09	4.84	31	0.0%	0.0%	0.00	0.00	7.4%	2.3%	0.152	0.113	0.07%
Kuwait Business Town Real Estate	0.059	0.000	-0.17%	0.73	16.30	0.00	34	-0.2%	-28.1%	0.03	0.51	3.8%	2.8%	0.100	0.046	0.08%
Dalqan Real Estate	0.208	0.001	0.48%	1.86	192.59	0.00	13	0.5%	-4.1%	0.01	0.04	1.0%	1.0%	0.274	0.195	0.03%
Sokouk Holding	0.024	-0.001	-3.64%	0.55	NM	0.00	14	-3.6%	-27.0%	0.00	0.04	-2.9%	-1.7%	0.038	0.020	0.03%
Tijara and Realestate Investment	0.054	0.000	-0.56%	0.48	8.16	5.56	20	-0.6%	-12.1%	0.05	0.95	6.0%	3.3%	0.089	0.044	0.05%
Al-Arabiya Real Estate	0.030	0.001	1.71%	0.36	NM	0.00	15	1.7%	-29.1%	0.01	0.19	-23.1%	-7.3%	0.052	0.026	0.03%
Aqar Real Estate Investments	0.056	0.000	0.54%	0.46	17.96	5.96	13	0.5%	-28.7%	0.00	0.01	2.6%	2.1%	0.097	0.052	0.03%
Mashaer Holding	0.055	0.000	0.36%	0.65	NM	0.00	10	0.4%	-21.3%	0.00	0.01	-6.5%	-3.2%	0.086	0.049	0.02%
Dar Al Thuraya Real Estate	0.170	0.000	0.00%	1.47	25.07	0.00	25	0.0%	61.9%	0.00	0.00	6.0%	5.3%	0.172	0.092	0.06%
Osos Holding Group	0.105	-0.005	-4.55%	0.92	8.36	9.09	11	-4.5%	0.0%	0.00	0.01	11.2%	7.1%	0.147	0.094	0.03%
Al Massaleh Real Estate	0.036	0.001	2.86%	0.59	NM	0.00	8	2.9%	-30.9%	0.00	0.02	-15.4%	-3.2%	0.060	0.030	0.02%
Kuwait Remal Real Estate	0.007	-0.001	-12.50%	0.90	NM	0.00	2	-12.5%	-63.4%	0.02	3.14	-110.3%	-12.4%	0.024	0.007	0.00%
Kuwait Real Estate Holding	0.034	0.000	0.00%	0.64	12.32	0.00	6	0.0%	-35.6%	0.00	0.00	5.1%	1.7%	0.059	0.032	0.01%
Taameer Real Estate Investment	0.024	0.000	0.42%	0.38	NM	0.00	5	0.4%	-42.1%	0.00	0.10	-6.5%	-4.9%	0.054	0.018	0.01%
Sanam Real Estate	0.065	0.000	0.00%	0.85	28.93	0.00	8	0.0%	-17.9%	0.00	0.00	2.9%	2.8%	0.100	0.053	0.02%
Mena Real Estate	0.030	0.001	3.46%	0.27	NM	0.00	4	3.5%	-40.2%	0.00	0.00	-6.8%	-5.4%	0.098	0.028	0.01%
Al Masaken International Real Estate Developmen	0.028	0.000	-0.70%	0.46	NM	0.00	3	-0.7%	-35.5%	0.00	0.08	-1.1%	-0.4%	0.069	0.027	0.01%
Real Estate Trade Centers	0.052	0.000	0.39%	0.29	21.55	0.00	7	0.4%	-26.4%	0.00	0.00	1.3%	1.1%	0.123	0.043	0.02%
Land United Real Estate	0.068	0.000	0.00%	0.60	NM	0.00	10	0.0%	-27.6%	0.00	0.00	-4.8%	-1.5%	0.121	0.052	0.02%
Total Real Estate - 34 Companies							2,576			3.84	34.32					5.90%

DAILY MARKET COVERAGE REPORT

NIC MENA SECURITIES - RESEARCH AND STUDIES DEP



Technology	Price			Valuation Multiples			MKT Cap	Price Performance		Trading Indicators		ROE	ROA	52 Week (KD)		MKT Cap
	Close (KD)	Day Δ	Day % Δ	PBV(X)	PE(X)	DY%	Mn KD	MTD(%)	YTD (%)	Value (Mn KD)	(Mn Shrs)	(%)	(%)	High	Low	%
Automated Systems	0.085	0.001	1.43%	0.75	NM	0.00	9	1.4%	-9.6%	0.00	0.06	-3.4%	-3.0%	0.116	0.074	0.02%
Total Technology - 1 Companies				0.75	NM	0.0%	9			0.00	0.06	-3.40%	-2.96%			0.02%

Telecom	Price			Valuation Multiples			MKT Cap	Price Performance		Trading Indicators		ROE	ROA	52 Week (KD)		MKT Cap
	Close (KD)	Day Δ	Day % Δ	PBV(X)	PE(X)	DY%	Mn KD	MTD(%)	YTD (%)	Value (Mn KD)	(Mn Shrs)	(%)	(%)	High	Low	%
Mobile Telecommunications	0.604	0.005	0.83%	2.20	14.28	5.51	2,614	0.8%	1.5%	2.35	3.91	15.6%	4.3%	0.698	0.564	5.98%
Kuwait Telecommunications	0.597	0.007	1.19%	2.68	13.73	5.08	596	1.2%	39.6%	0.21	0.36	20.1%	10.9%	1.189	0.418	1.36%
National Mobile Telecommunications	1.019	-0.006	-0.59%	0.96	13.22	3.41	511	-0.6%	63.3%	0.04	0.04	7.2%	4.2%	1.280	0.615	1.17%
AAN Digital Services	0.016	0.000	0.00%	0.60	NM	0.00	14	0.0%	-2.4%	0.00	0.00	NM	NM	0.020	0.016	0.03%
Hayat Communications	0.060	0.001	0.85%	0.48	NM	0.00	5	0.8%	-43.9%	0.00	0.02	-0.7%	-0.3%	0.124	0.050	0.01%
Telecom - 5 Companies							3,740			2.60	4.32					8.56%

Utilities	Price			Valuation Multiples			MKT Cap	Price Performance		Trading Indicators		ROE	ROA	52 Week (KD)		MKT Cap
	Close (KD)	Day Δ	Day % Δ	PBV(X)	PE(X)	DY%	Mn KD	MTD(%)	YTD (%)	Value (Mn KD)	(Mn Shrs)	(%)	(%)	High	Low	%
Shamal Az-Zour Al-Oula Power & Water	0.191	-0.002	-1.04%	2.15	14.62	9.33	210	-1.0%	-16.2%	0.06	0.33	19.1%	2.9%	0.247	0.188	0.48%
Total Utilities - 1 Companies							210			0.06	0.33					0.48%

Total Market 156 Companies				2.00	31.19	3.97	43,692			57.80	175.44					100%
-----------------------------------	--	--	--	-------------	--------------	-------------	---------------	--	--	--------------	---------------	--	--	--	--	-------------

End of Report

The information contained in this document is proprietary to NIC and is for use only by the persons to whom it is issued. This document is confidential and may not be distributed either in part or in whole without the express agreement of NIC. It is intended solely for the use of the individual or entity to whom it is addressed and others authorized to receive it.

Note : ROE and ROA is calculated based on LFY net profit & shareholders' equity and LFY Operating Profits & Total Assets

Sources : National Investments Company Research and Studies Departments, Boursa, Refinitiv.



شركة الاستثمار الوطنية
NATIONAL INVESTMENTS COMPANY

Sharq, Al Mutanabi Street, Khaleejia Tower | P.O. Box 25667, Safat 13117, Kuwait

T.: +965 2226 6666 | Fax: +965 2226 6793 | www.nic.com.kw